

Social Emotional Learning from the Top Down: Administrative Practices that Support Children's Emotional Development
Webinar, August 2, 2017

References and Resources

- Able, M.B., Talan, T. (2017). Closing the Leadership Gap: Status report on early childhood program leadership in the United States. www.LEADClearingHouse.org.
- Abel, M., Talen, T., & Masterson, M. (2017, January/February). Whole leadership: A framework for early childhood programs. *Exchange*, 22-25.
- Bloom, P.J., ((2014, July/August). Teacher induction—A lifeline for novice teachers, *Exchange*, 20-23.
- Bloom, P. J., Hentschel, A., & Bella, J. (2013). Inspiring peak performance: Competence, commitment, and collaboration. Lake Forest, IL: New Horizons.
- Beginnings Professional Development Workshop—Mental Health (2014). *Exchange*, September/October.
- National Council on the Developing Child. (2007). The science of early childhood development. <http://developingchild.net>
- National Council on the Developing Child at Harvard University. (2016). From best practices to breakthrough impacts: A science-based approach to building a more promising future for young children and their families.
- Center on the Developing Child (2016). Building core capabilities for Life: The science behind the Skills adults need to succeed in parenting and in the workplace. <http://developingchild.harvard.edu>
- Center on the Developing Child at Harvard University (2016). *Building core capabilities for life: The science behind the skills adults need to succeed in parenting and in the workplace*. Retrieved from www.developingchild.harvard.edu.
- Kauffman Foundation (2002/2016), Set for success: Building a strong foundation for school readiness based on the social-emotional development of young children. The Kauffman Early Education Exchange, Volume 1, Number 1, Summer 2002. Available at SSRN: <https://ssrn.com/abstract=2355477> or <http://dx.doi.org/10.2139/ssrn.2355477>
- Murray, D.W., Rosanbalm, K. & Christopoulos, C. (2015). Self-regulation and toxic stress report 4: Implications for programs and practice. OPRE Report # 2016-97m Washington, DC: Office of Planning, Research and Evaluation, Administration for Children and Families, U.S. Department of Health and Human Services.
- National Scientific Council on the Developing Child (2007). The science of early development (2007). <http://developingchild.net>
- Whitebrook, M., & Belm, D. (2014, July-August). Mentors as teachers, learners, and leaders. *Exchange*, 14-16.

Zero to Three (2015). Cross-sector core competencies for prenatal to age 5 field.
Washington, DC: Zero to Three and First LA 5.

Resources

Baby Talk, Frank Porter Graham, UNC, subscribe-babytalk@listserv.unc.edu

Center for the Emotional Foundations of Learning, <http://csefel.vanderbilt.edu>

Edutopia, www.Edutopia.org

Frank Porter Graham Child Development institute, <http://fpg.unc.edu>

National Association for the Education of Young Children, www.naeyc.org

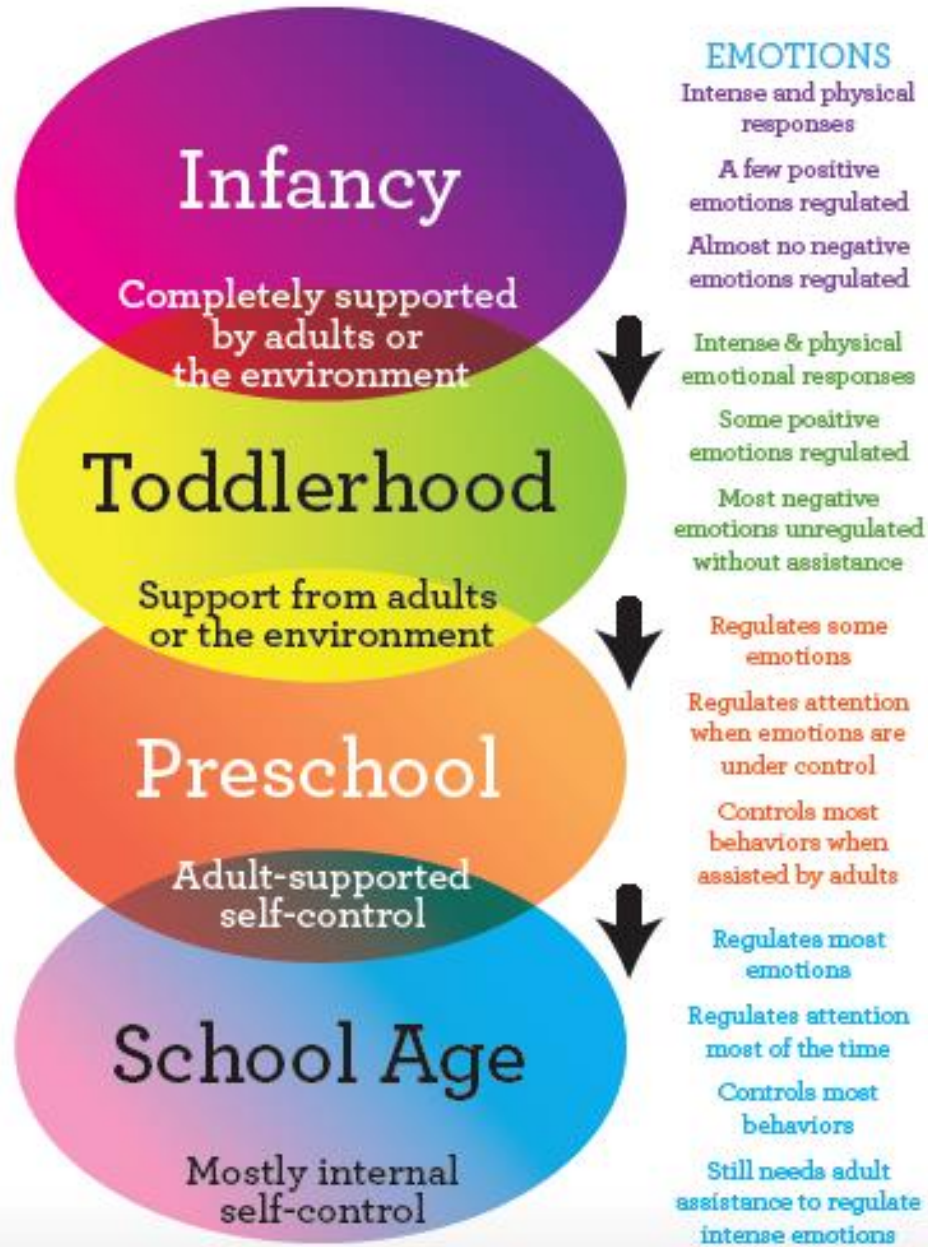
Videatives, www.videatives.com

Zero to Three, www.zerotothree.org

Emotions Words

Glad	Sad	Mad	Afraid	Other
content pleased playful cheerful giddy calm comfortable delighted jolly bubbly tickled silly frisky happy proud joyful excited thankful great loved loving blissful grateful satisfied alive sparkly wonderful ecstatic terrific jubilant amused optimistic elated relieved enthusiastic hopeful	blah blue gloomy rotten unhappy empty disappointed hurt lost sorry ashamed lonely down hopeless discouraged awful miserable crushed helpless depressed withdrawn heartbroken unloved resentful suspicious vulnerable wistful	bugged annoyed irritated mean crabby cranky grumpy grouchy disgusted ticked off angry smoldering hot frustrated impatient fed-up fuming infuriated destructive explosive violent enraged furious outraged spiteful aggravated	uncomfortable startled uneasy tense anxious worried concerned alarmed scared frightened fearful threatened trembly shaken disturbed dread panicky terrified horrified petrified hostile insecure confused	shy curious weird confused moody quiet jealous embarrassed guilty responsible ashamed caring bored indifferent restless exasperated awkward neglected uncertain preoccupied protective rejected regretful weary

Internalization of Self-Control



*Forrester, M.M, & Albrecht, K.M. (2014). Social emotional tools for life: An early childhood teacher's guide to strong emotional foundations and successful social relationships, Houston, TX: Innovations in ECE Press.