

Rebuilding Your Child Care Business: Technology Makes it Possible

Presented for Early Childhood Investigations

Presented by Monique Reynolds, QCCC, Atlanta, Louise Stoney and Sharon Easterling, Opportunities Exchange | January 7, 2021

1



Opportunities Exchange: Transforming the business of Early Care and Education



Helping the early childhood field achieve financial sustainability and strong child outcomes through Shared Services.

What We Do

- Shape public policy and public financing in ways that incentivize high quality, sustainable care for young children
- Provide technical assistance to early childhood stakeholders who want to develop new, sustainable business models

2



We Believe

- Every director deserves an administrative team.
- Every teacher deserves pedagogical leadership.
- Every child deserves a reflective teacher.



3



4

Agenda

Seeing What's Possible – Monique Reynolds
Lessons from Quality Care for Children's Provider Resource Hub, Atlanta Georgia

From Impossible to Possible – Sharon Easterling
Making Business Success real for your program

From the System we Have to the System we Need – Louise Stoney
How Data can Transform ECE

www.opportunitiesexchange.org

5

Seeing What's Possible

Lessons from Quality Care for Children's Provider Resource Hub, Atlanta Georgia

www.opportunitiesexchange.org

6

Quality Care for Children



QCCworks

FOR SUSTAINABLE CHILD CARE

What we do: Our Business Support Services was designed to empower child care owners by giving them the tools needed to sustain and excel their business. We provide a comprehensive strategy using hands-on support to help providers transform the way they manage their business through four main areas:

- Provider Resource Hub
- Provider Business Exchange
- Provider Back Office Support
- Business Automation & Coaching

www.qccworks.org/exchange_2

7

Possibilities.....



GROWTH



WORK **LIFE**



VACATION



**Retirement
TH 401K
PLANNING**

BALANCE



**WORK HARD
It's the ticket to success**

ACTION

www.qccworks.org/exchange_3

8

Business Automation

Provide grant funds for programs to convert to automation and assistance with set up.

- ✓ Procare and Wonderschool child care software
- ✓ Pay full year subscription and/or purchase hardware if program has system
- ✓ One-On-One Training Assistance
- ✓ Back Office Support

www.qccworks.org/exchange_3

9

It is what it is.....and that's OKAY!

**Step 1:
Assess & Analyze**

- ✓ Business Financial Health Assessment
 - ✓ Iron Triangle Model
 - ✓ Budget
- ✓ Identify problems and challenges
- ✓ Analyze the issues
- ✓ Develop plan of Improvement/ACTION




10

The Woe of Business Operations

**Step 2:
Organize**

- ✓ Plan out separate modules
- ✓ Gather materials needed
- ✓ Internal system set-up
- ✓ Schedule time
- ✓ Set hard deadlines
- ✓ Leadership team approach




11

We Did It!

**Step 4:
Reflect**

- ✓ Celebrate the conversion
- ✓ CRY
- ✓ Lessons Learned
- ✓ Plan/Schedule Possibilities
- ✓ No turning BACK!



12

Work smarter! More efficiently!

Step 3: Conversion to Technology

- ✓ Group/Individual Module Training
- ✓ Assign out task per module
- ✓ Mastery of modules-process. Reach out-Help Desk-View CCMS videos related to the task
- ✓ Stick to deadlines
- ✓ Accountability Partner/Coach



www.assistedliving.com

13

Progress Maintenance Rule

Step 5: Monitoring

- ✓ Weekly, Biweekly, Monthly
- ✓ Track and note benchmark results
 - ✓ Financial Health Score
- ✓ Adjust where needed
- ✓ Follow and enforce the system created



www.assistedliving.com

14

Benefits: Lower Administrative Cost

Task	Before Automation	After Automation
Payroll/HR tracking	6-8 hours/biweekly	1 hour/biweekly
Tuition billing, tracking	10-12/month	.5 hours/month
Attendance tracking/subsidy billing	10 hours/week	.5 hours/week
Waitlist management/enroll new families	6 hours/month	1 hour/month
Total	48-54 hours/month .5 FTE staff	5.5 hours/month .0009 FTE

Streamlining time-consuming tasks to lower your overhead costs

www.assistedliving.com

15

Benefits: Steady Cash Flow

- Cash is King
- Ability to pay bills on time and in full
- GREAT Financial revenue report
- Access to Capital when needed

Boost collections and strengthen enrollment to increase revenue

www.great.org/act/2018_03_13

16

Benefits: Accurate Operations Data

- Enrollment & Vacancy List
- Collections Report
- Third Party Billing
- Labor Cost-Payroll Records
- Remote Monitoring/Dashboard
- Expenses & Account Ledger
- Communication System
- Compliance Reports
- Attendance Tracker
- Employee Trainings
- 1st Aid/CPR Expiration
- Immunization Records
- Meal Tracker (USDA Food Program)

Provide actionable, accurate, and timely data needed to make smart decisions

"What gets measured, gets managed." – Peter Drucker

www.great.org/act/2018_03_17

17

Results to Date: QCC Business Leadership

When the Project Began....

Average bad debt was \$52,532 per program

Many sites were not fully enrolled & most did not have procedures in place to track + boost enrollment

None of the sites were using automated systems to support best practice business management

Eleven months later....

Average bad debt was \$877 per program

Providers now have systems to flag problems and address them before debt accumulates.

Enrollment (filling vacancies) grew by 34%

Overall program revenue increased by 24%
Two programs more than doubled revenue + one almost tripled revenue.

Programs with automation were more likely to survive pandemic

www.great.org/act/2020_03_18

18

Are you READY? Let's learn more!



www.godaddy.com/stock-photo/08_19

19

Moving from Impossible to Possible
Making Business Success real for your program

www.godaddy.com/stock-photo/08_20

20

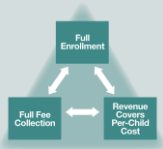
How to make this work for you...

Everyone doesn't have access to a Monique in their community...so how can you begin to implement these strategies in your own program?

www.godaddy.com/stock-photo/08_21

21

Assess: Can you answer the Iron Triangle metrics?



- How much money is owed to you that you haven't collected?
- How fully enrolled are your classrooms?
- Is your **price** roughly the same as your **cost**?
- What percent of your personnel costs are going to administrative overhead?

If you can't answer these questions – CCMS can help.

www.ccsolutions.net/ccms/06_20

22

Automation will transform your program

- Save time
- Saves money
- Increases Revenue
- Gives you data you need to make business decisions

You can't afford to be without business software tools

www.ccsolutions.net/ccms/06_20

23

Research and select a CCMS



Website: Capterra
<https://www.capterra.com/child-care-software/>

- Listing of available products
- Compare up to 4 products at a time
- User Reviews

www.ccsolutions.net/ccms/06_20

24

Research and select a CCMS



Opportunities Exchange
www.opportunities-exchange.org

[Child Care Management Software FAQ](#)

[Child Care Management Software - What you Need to Know](#)

Reach out to OppEx for more detailed resources

25

Research and select a CCMS

- 1 Talk to colleagues – Who is using a CCMS? What is their experience?
- 2 Identify most important features: i.e. - billing, subsidy management, family communication, food program, etc.
- 3 Reach out to a few vendors and ask for a demo, free trial, etc.

Select a product and get started

26

Focus on one component at a time

- 1 Child and family records
- 2 Attendance tracking
- 3 Billing and collections
- 4 Family engagement
- 5 Food program management
- 6 Marketing, enrollment, waitlist management
- 7 Staff management

Each step you take brings you closer to best business practices

27

Child/Family Records

- Create an online version of your enrollment form**
 - Many systems allow electronic versions of all the forms families must sign
- Send a link to each family to fill out**
 - Create incentives for families to respond in a timely way
- When they send it back you now have a record for that child**
 - Families can update information annually, or when there is a change
- All records are integrated for every other program component**
 - Billing, food program, child assessment, etc.

By having families complete the form, you also ensure that families will engage with the CCMS

www.opportunitiesexchange.org

28

Attendance Tracking

- Parents sign in/out with unique "PIN", QR code, signature, fingerprint**
 - Ask about "touchless" sign-in options
- Attendance records used for more efficient subsidy billing + reporting**
 - Electronic signatures more secure than pen/paper
- Time stamps can automatically add late fees**
 - Parents receive details accounting of all charges in billing period

Opportunities Exchange and others are working to increase states' acceptance of electronic signatures

www.opportunitiesexchange.org

29

Billing and Collections

- Set up Invoicing for each family, specify:**
 - What they pay
 - How often they pay (weekly, bi-monthly, monthly)
 - Decide when you want the invoices to be emailed to families
 - Invoices will be created sent automatically
- Collections:**
 - Ask (or require) families to pay electronically
 - Families can choose manual or automatic payments

Families have 24/7 access to their account status and end of year tax information

www.opportunitiesexchange.org

30

Consider this...



31

Family Engagement

Communication is key – especially in these uncertain times

- Targeted, timely, frequent, messaging

Meeting Covid requirements can be burdensome

- Touchless sign-in/out with a smartphone
- Daily health checks that parents can verify electronically

Information can be sent via mobile app on phones/tablets

- Photos, videos, text, hyperlinks, etc.

Families who are concerned about the safety of group settings want and need frequent updates

www.ccsystems.net/eng_08_21

32

Food Program Management

Some providers choose not to participate – and lose potential revenue

- Automation makes participation easy and prevents errors

CCMS supports menu planning with approved items

- Ensures you meet requirements; makes participation easy and prevents errors

"Meals/snacks served" are automatically populated with attendance data

- Children who are marked "present" are noted as "served"
- Time stamp ensures accuracy (i.e. - breakfast served 7:00-8:30, a child arrives at 8:50, breakfast service not included)

Reports downloaded to sponsor or uploaded into reporting systems

- CCMS saves hours of time in documentation

CCMS helps you make the most of your food program \$\$

www.ccsystems.net/eng_08_21

33

Marketing, Enrollment and Waitlist Management

National average enrollment is 50% of pre-pandemic levels

Families need to find you & enroll as seamlessly as possible

- Parents can view a calendar and schedule a virtual tour

Enrollment process can be shortened from weeks to days

- Paperwork completed online and uploaded into your system

CCMS manages part-time slots to ensure maximum enrollments

- Right size classrooms with staff-child ratio tools

"Every seat filled" matters now more than ever

www.ccmsoft.com/techhelp/05_28

34

Staff Management

Staff time sheets generated by electronic sign in/out

- Reports electronically transferred to payroll service – greatly simplifying the process

Electronic tracking of what tasks staff are performing

- For job sharing teaching/admin responsibilities

Manage COVID-19 policies and schedules

- Bringing staff back in less than full employment; sharing tasks + jobs
- Scheduling, tracking assignments, maintaining ratios in small consistent groupings
- New training requirements

The cost savings in payroll processing alone can typically more than pay for the CCMS subscription fee

www.ccmsoft.com/techhelp/05_28

35

Business software changes your role...

FROM



An Administrator spends hours on tasks that could be done in minutes or seconds through business software

TO



A Business Leader understands her business and how decisions in specific areas will affect her bottom line

36

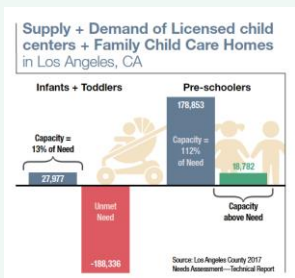
From the System We Have to the System We Need How data can transform ECE

www.coonstate.edu/2018/08/27

37

Lack of Data Leads to Misguided Policy + Finance

- Few states have data on ECE capacity by age of child
- Almost no state has data on ECE enrollment by age of child

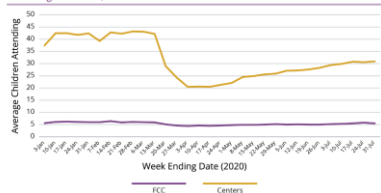


www.coonstate.edu/2018/08/28

38

Systemic Solutions Require Systemic, Real-time Data

Figure 4: Average Weekly Attendance, January to July 2020, Early Learning Ventures, Colorado Providers



39

Data Sharing and Automation: Building the System



Confidential & Proprietary Information of State, Bylaws, BridgeCare & Children Home of America, © 2020

40

Collecting Real-Time Supply + Demand Data is Possible

Example from TX Emergency Child Care Data System

Supply

Open providers	#	%
Center providers	334	47%
Family home providers	372	53%
Willing to extend hours	82	12%

Available Slots (vacancies)	slots	slots
Infant	289	1,382
Toddler	587	2,309
3-5 years old	373	3,112
School-aged	306	2,825
Total	1,555	9,628

Data by City	Sites	Infant	Toddler	3-5 Yrs	School-aged	Total
Alago	1	8	2	10	27	47
Arlington	101	327	630	744	688	2,193
Fort	4	8	41	46	80	175
Bedford	15	95	82	123	113	393
Bedbrook	3	4	7	9	10	30

Demand

Eligible applications	#	%
% pending placement	2%	
% enrolled	86%	
Total	88%	

Application by Industry	#	%
Healthcare	587	34%
Local State Govt	122	7%
Restaurants, Grocers, Food	108	11%
First Responder	75	4%
Sole Salaried	20	1%
Childcare worker	237	14%
Mail Delivery	65	4%
Military	17	1%
Maintenance	2	0%
Finance	79	5%
Construction	16	1%
Transportation	43	2%
Warehouse	68	4%
Leasing Agent	11	1%
Other	202	12%

41

With Good Data Public Policy CAN Support ECE Business Success



- Systemic data on enrollment (by age) will help programs effectively plan and stay full
- Payment based on enrollment (vs attendance) + affordable co-pays will boost collections
- Funding informed by supply + demand data, and rates informed by provider cost, will boost revenue

www.connectionexchange.org

42

How is Change Possible?

Ask public and private funders to support CCMS with grants for software licenses and hands-on technical assistance to help with onboarding and launch. Funding could come via:

- QRIS – as part of incentives + supports
- Quality Grants – under CCDF, CARES or PDG
- Professional Development Systems – linked to training and TA
- Director Credential – college credit for CCMS coaching

Helping YOU become a better child care business is the key goal!

www.opportunities-exchange.org

43

How is Change Possible?

Encourage state policy makers to create Data Trusts and work with CCMS vendors on data links (called Application Programming Interfaces, or APIs) to support:

- Child Care Subsidy – electronic transmission of enrollment + attendance
- Licensing – accept electronic documentation for compliance
- QRIS – accept electronic documentation for quality rating
- PD Systems – electronic links from CCMS to PD Registry
- CCR&R – links to CCMS for real-time supply + vacancy data

www.opportunities-exchange.org

44





 For More Information ...

Opportunities Exchange

 Profiles, Tools, Resources, Metrics, Issue Briefs and more ...

www.opportunities-exchange.org

45
