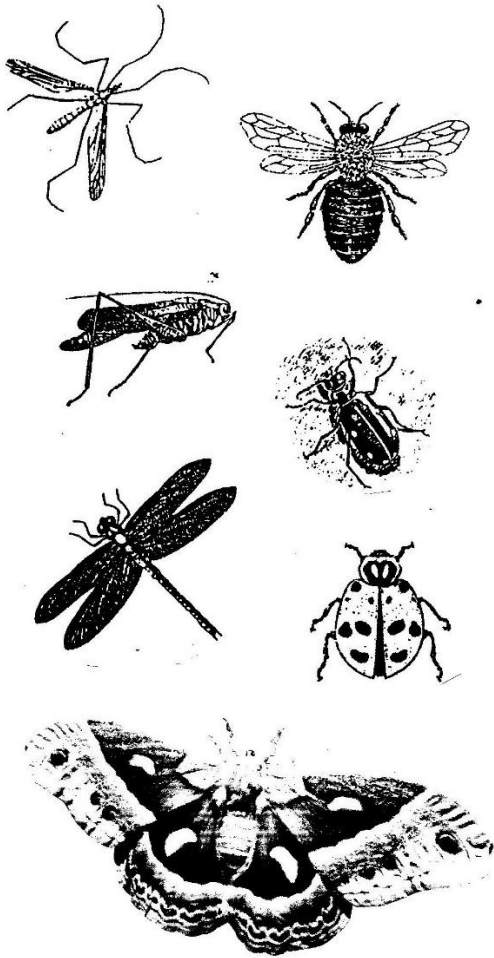


Invent a New Insect

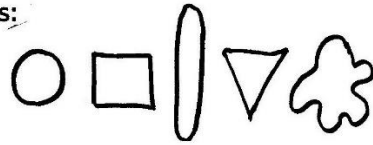
Draw an insect. Will it be realistic or imaginary?
Include insect characteristics.

Identify the head, thorax, abdomen, and other insect parts in the illustrations.

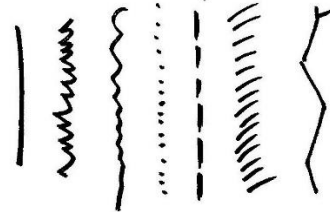


Three body parts:

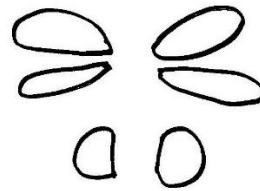
- head
- thorax
- abdomen



Six legs



2 or 4 wings



- eyes
- antennae
- proboscis
- pincers
- stingers

